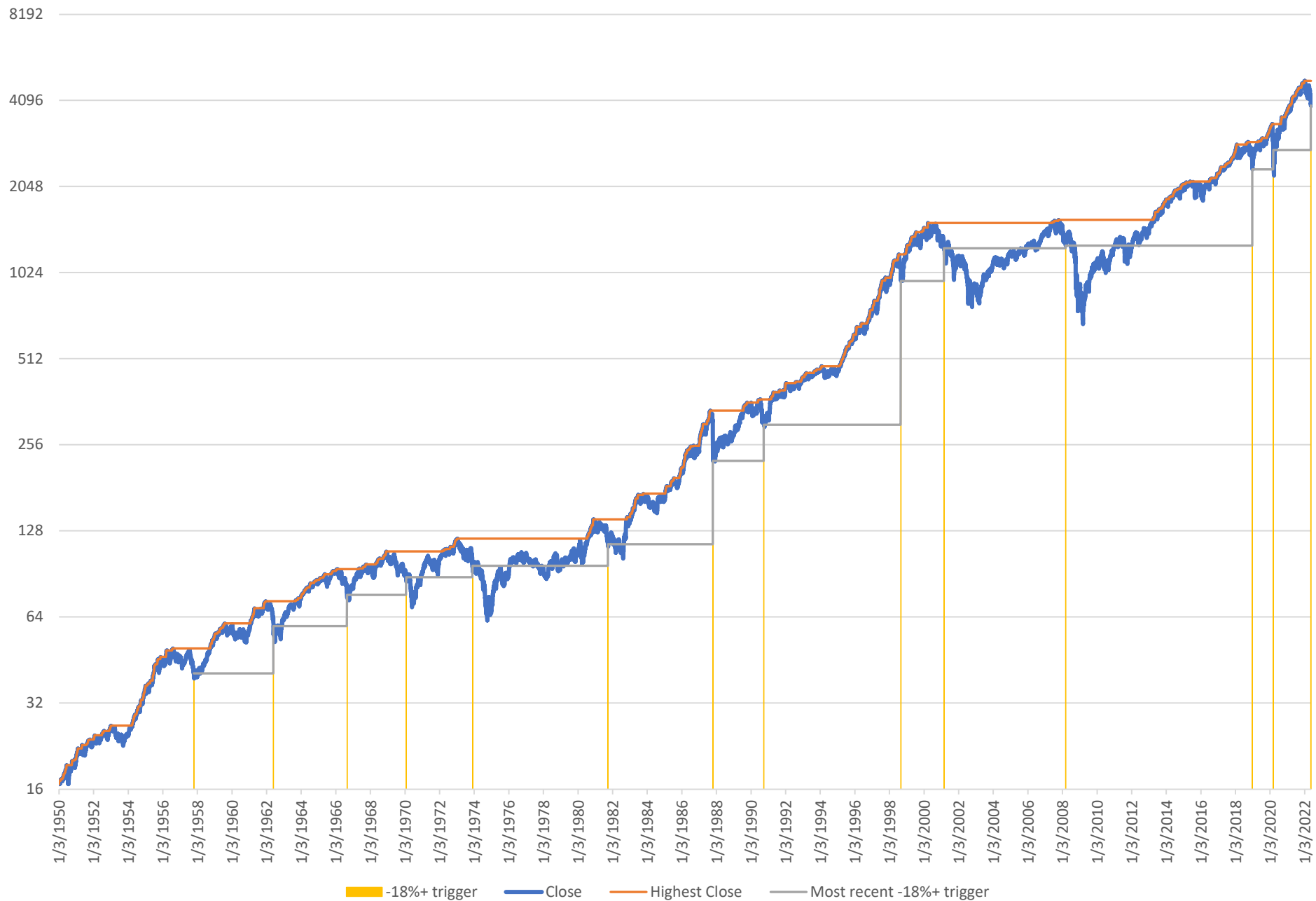
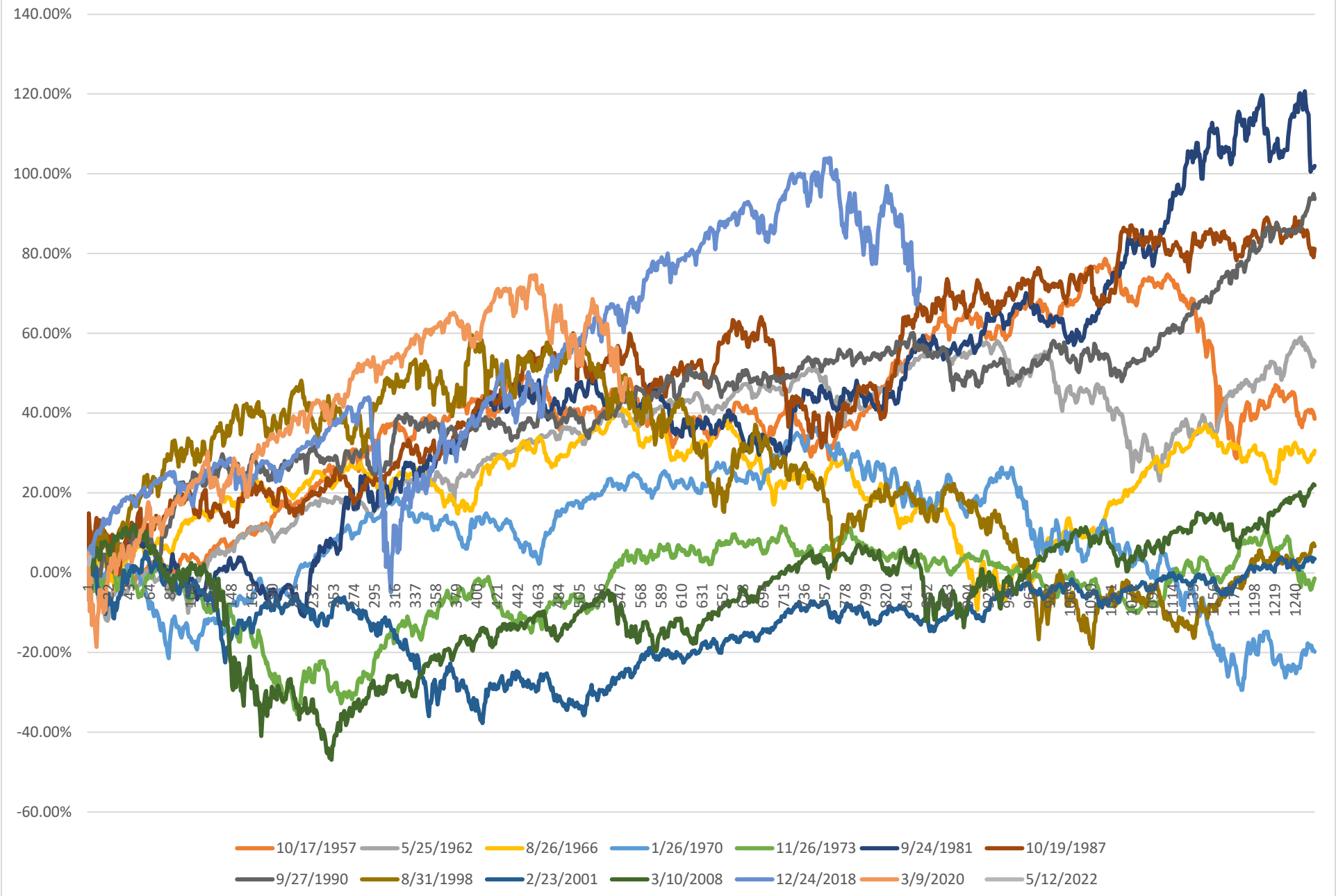


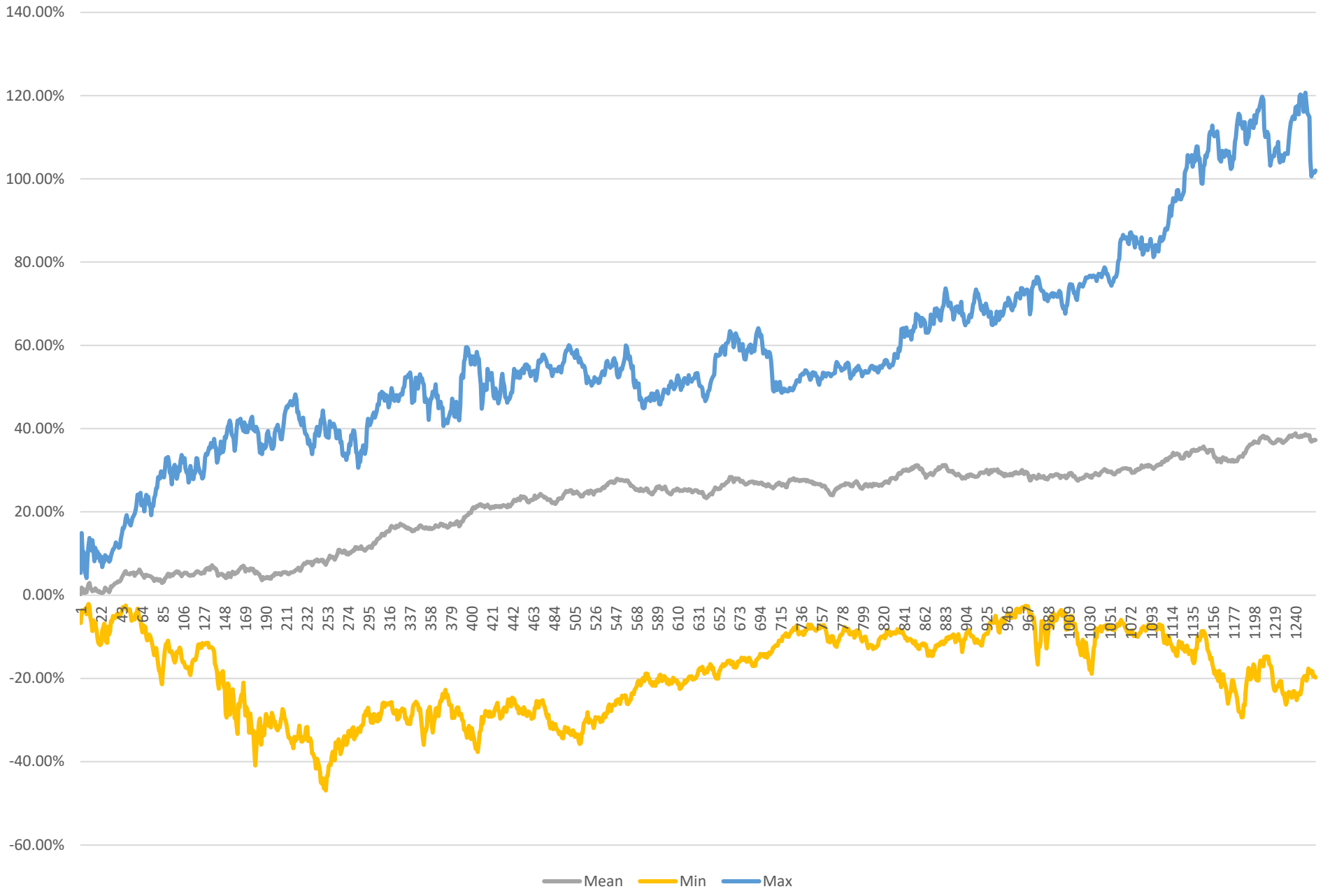
S&P 500 Price-Only Logarithmic Scale with Highest Close-to-Date and All 14 Next Drops of 18% or More, January 3, 1950 - May 17, 2022



Price Pathways of S&P 500 Index from First 18%+ Drop after Highest Close-to-Date,
 January 3, 1950 - May 17, 2022



Max/Min/Mean of 11 Price % Gain/Loss of S&P 500 Index from First 18%+ Drop after Highest Close-to-Date, Beginning January 3, 1950 - May 17, 2017



S&P 500 price-only changes over various trading days:
 14 instances of a drop of at least 18% from 1/3/1950 to 5/17/2022 vs. all days

